

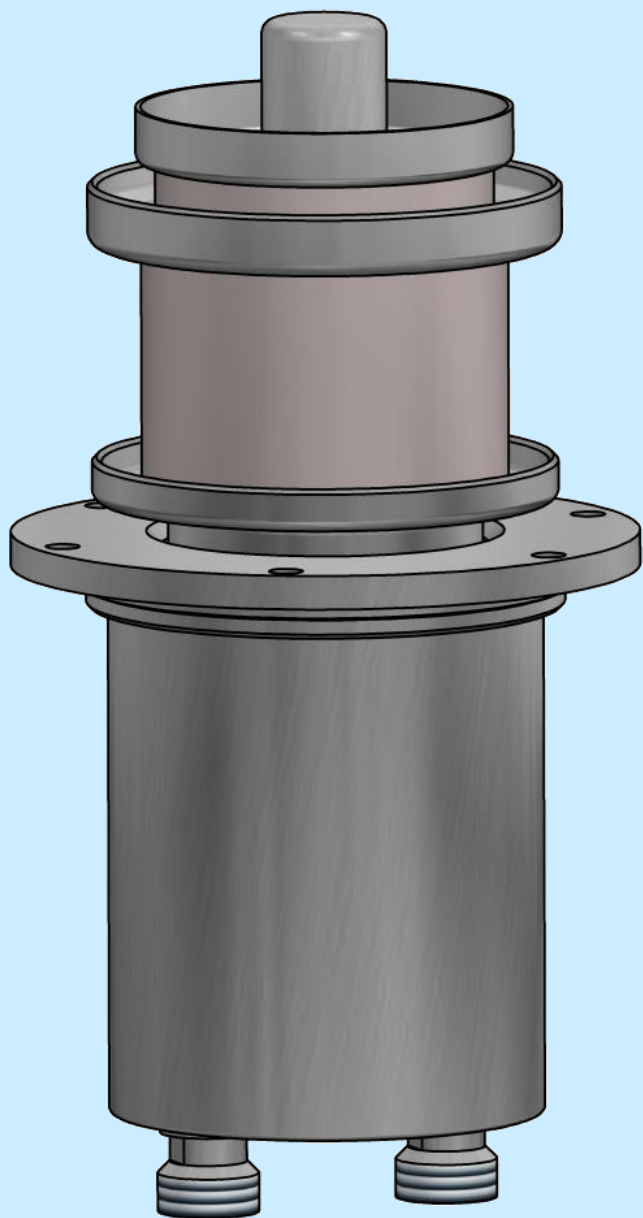
RD20ZM / RS3021CJ

Water-cooled power triode

Output power: 25 kW



TESLA
Electron**Tubes**



RD20ZM is water-cooled high-amplification triode, made by metal-ceramic technology. This electron tube is intended for industrial generators and amplifiers up to 120 MHz.

RD20ZM is mostly used in generators for CO₂ laser cutting machines TRUMPF up to 4 KW.

For operation in pulse mode, the parameters depends on equipment characteristics. Contact us for specific information.

RD20ZM / RS3021CJ

Water-cooled power triode

Output power: 25 kW



Technical specifications

| | | |
|----------------------|-----|------|
| Cathode | WTh | |
| Filament voltage | 5.7 | V |
| Filament current | 135 | A |
| Amplification factor | 120 | |
| Transconductance | 50 | mA/V |
| Capacitance | | |
| • grid-anode | 11 | pF |
| • grid-cathode | 56 | pF |
| • cathode-anode | 0.3 | pF |

Maximum ratings

| | | |
|----------------------|------|-----|
| Frequency | 120 | MHz |
| Anode voltage | | |
| • < 40 MHz | 14 | kV |
| • ≥ 40 MHz | 10 | kV |
| Grid voltage | -800 | V |
| Grid current | 1.1 | A |
| Grid dissipation | 500 | W |
| Anode dissipation | 20 | kW |
| Peak cathode current | 25 | A |

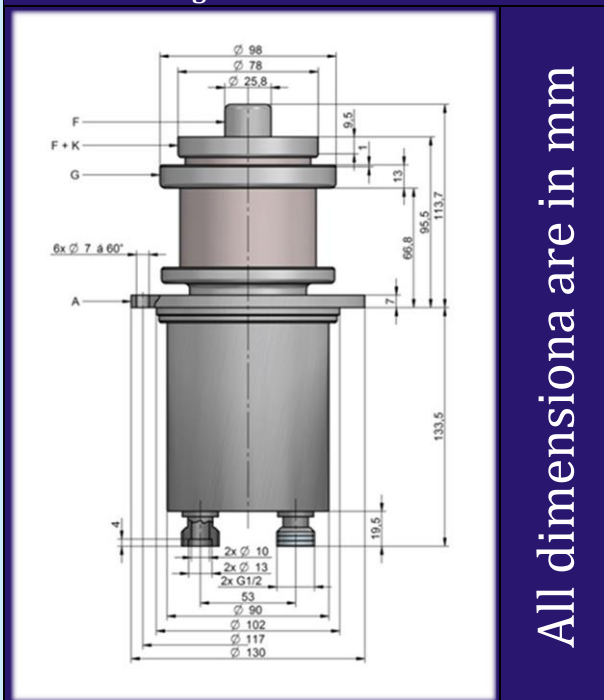
Mechanical characteristics and cooling

| | | |
|-------------------------------------|----------------------------|-------|
| Anode cooling | water | |
| Water inlet temperature | 35 | °C |
| Temperature (any point of envelope) | 220 | °C |
| Water inlet pressure | 10 | bar |
| Water flow | 16 | l/min |
| Mounting position | vertical, anode up or down | |
| Weight | 4.1 | kg |

Additional accessories*

| |
|---|
| Sacrificial anodes |
| Hoses |
| Seals |
| Grid contact ring |
| Filament contact rings |
| |
| *for detailed information please contact our sales department |

Outline drawing



All dimensions are in mm

Constant current characteristics

