

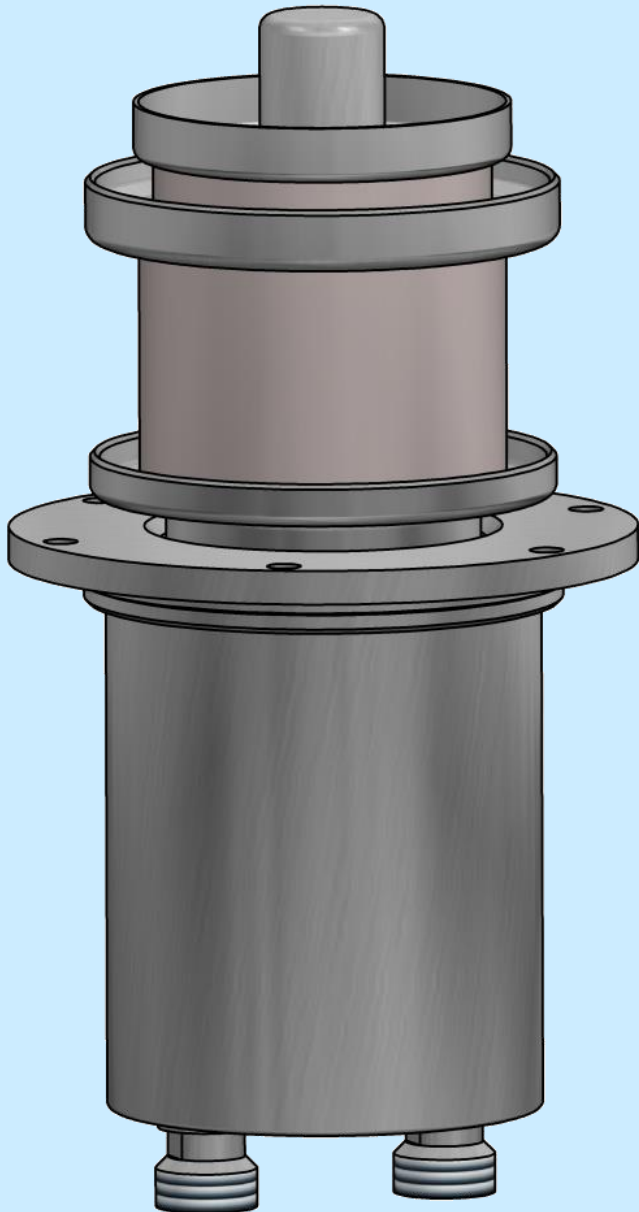
RD21ZM / RS3020CJ

Water-cooled power triode

Output power: 20 kW



TESLA
Electron**Tubes**



RD21ZM is water-cooled high-amplification triode, made by metal-ceramic technology. This electron tube is intended for industrial generators and amplifiers up to 120 MHz.

RD21ZM is mostly used in HF generators for industrial applications: welding, hardening, heating.

For operation in pulse mode, the parameters depends on equipment characteristics. Contact us for specific information.

RD21ZM / RS3020CJ

Water-cooled power triode
Output power: 20 kW



Technical specifications

Cathode	WTh	
Filament voltage	5.7	V
Filament current	135	A
Amplification factor	22	
Transconductance	35	mA/V
Capacitance		
• grid-anode	21	pF
• grid-cathode	52	pF
• cathode-anode	1.0	pF

Maximum ratings

Frequency	120	MHz
Anode voltage		
• < 40 MHz	12	kV
• ≥ 40 MHz	11	kV
Grid voltage	-1300	V
Grid current	0.9	A
Grid dissipation	300-230	W
Anode dissipation	20	kW
Peak cathode current	25	A

Mechanical characteristics and cooling

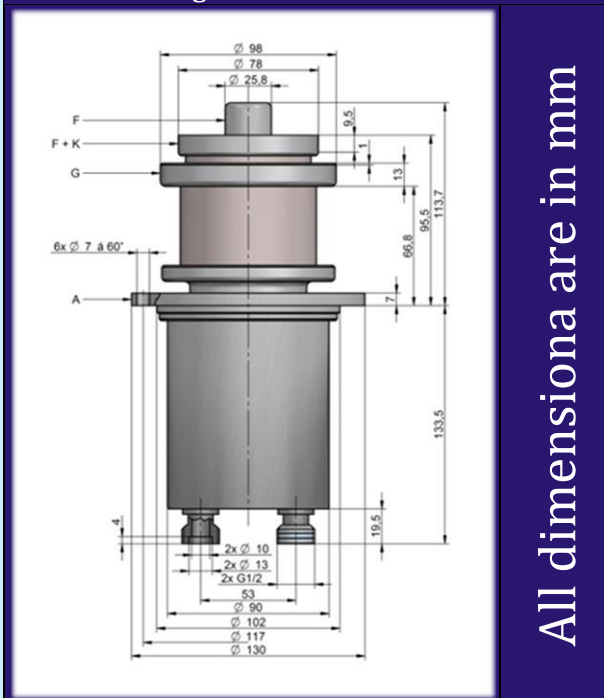
Anode cooling	water	
Water inlet temperature	35	°C
Temperature (any point of envelope)	220	°C
Water inlet pressure	10	bar
Water flow	16	l/min
Mounting position	vertical, anode up or down	
Weight	4.1	kg

Additional accessories*

Grid contact ring
Filament contact rings

*for detailed information please contact our sales department

Outline drawing



All dimensions are in mm

Constant current characteristics

